

GET IN TOUCH

To find out about availability for Z-1, contact a member of our sales team.
Sales +051 5709133 051 5709134
www.zetaislamabad.com info@zetaislamabad.com

G.T. Road, Opposite DHA Phase II, Islamabad.





ZETA-1

WELCOME
TO THE NEW
ADDRESS



ABOUT ARCHITECT

Objectives

The major objectives of the firm are adherence to professional attitudes regarding services & client satisfaction. There is a constant endeavor to gain confidence of client by virtue of highest possible professional standards meeting time line & giving value for money. We strive to enhance our culture through the art and practice of architecture. We conduct ourselves as the most viable solution providers in this professional field.

Values

We strive for the optimal solution for every design challenge to create enduring buildings that balance ideals, program, aesthetics and budget.

Process

We strive to provide a rewarding architectural experience through the course of design and construction. Our design methodology encourages client participation and collaboration with engineers, consultants, designers and contractors to create the highest quality product.

Quality

We strive to maintain an exciting controlled environment for project development by utilizing a project checklist that organizes our efforts and provides a qualitative measure of progress.



Our Vision to provide a high class residential area within **affordable price to everyone.**

ZETA-1

ABOUT DEVELOPERS

Zaraj Group Builder is a company having registered office at Plot No.141 & 142 Main Boulevard Zaraj Housing Scheme Islamabad. The objective of the Company is to run and manage all kind of businesses relating to residential housing and carry on the business for constructing of houses, apartment, shops, centers and plazas with all facilities.

Our project Z-1 is situated on GT Road in Zaraj Housing scheme Zone-V Islamabad sponsored by Zaraj Group (Pvt) Ltd. Zaraj Housing Scheme has been developed over and area of 1510 kanals, approved by the CDA and situated in Zone-V, Islamabad, facing Defense Housing Authority Phase II and GIGA Mall. It has all urban living facilities available in the vicinity include vast and open roads, proper sewerage system, electricity, gas, telephone and water supply. Zaraj Housing Scheme is distinct for its geographical terrains and is enjoying a unique location surrounded by many prestigious project like DHA phase II & III, Bahria, Al-Ghurair, Emmar and Agosh. The development standard of Zaraj Housing Scheme are strictly according to the specification of CDA.

ZETA-1

QUALITY AND DELIVERY ASSURED

Z1 is going to be your number one choice as its building is not just picturesque and eye-catching from the outside but is an epitome of opulence and comfort lifestyle for its residents and a place to make endless memories for its visitors. As the building also comprises a food court and shops which makes this building a perfect place for residing, shopping or just a hangout with friends and family. The building apartments are designed with modernity and functionality coupled together with a sense of home-like feeling and comfort any person desires.

The building is not only picturesque and state-of-the-art but also is surrounded with serene views with new height of luxury and leisure. The apartments ensure an exotic and oriental living experience, whereas the shops and food court in the building are a combination of diversity and recreational diversity. This building is designed and developed by our competitive developers having unparalleled expertise as well as our expert and dedicated workforce making this dream of a project a reality. The building is located in the heart of twin cities in front of GIGA Mall which makes it even more exquisite. The Building is a complete package of luxury and state-of-the-art features enriched with world-class attractions and facilities. The building is a marvel of perfection inside out with its unique and picturesque front elevation and charismatic interior and world class architectural beauty.

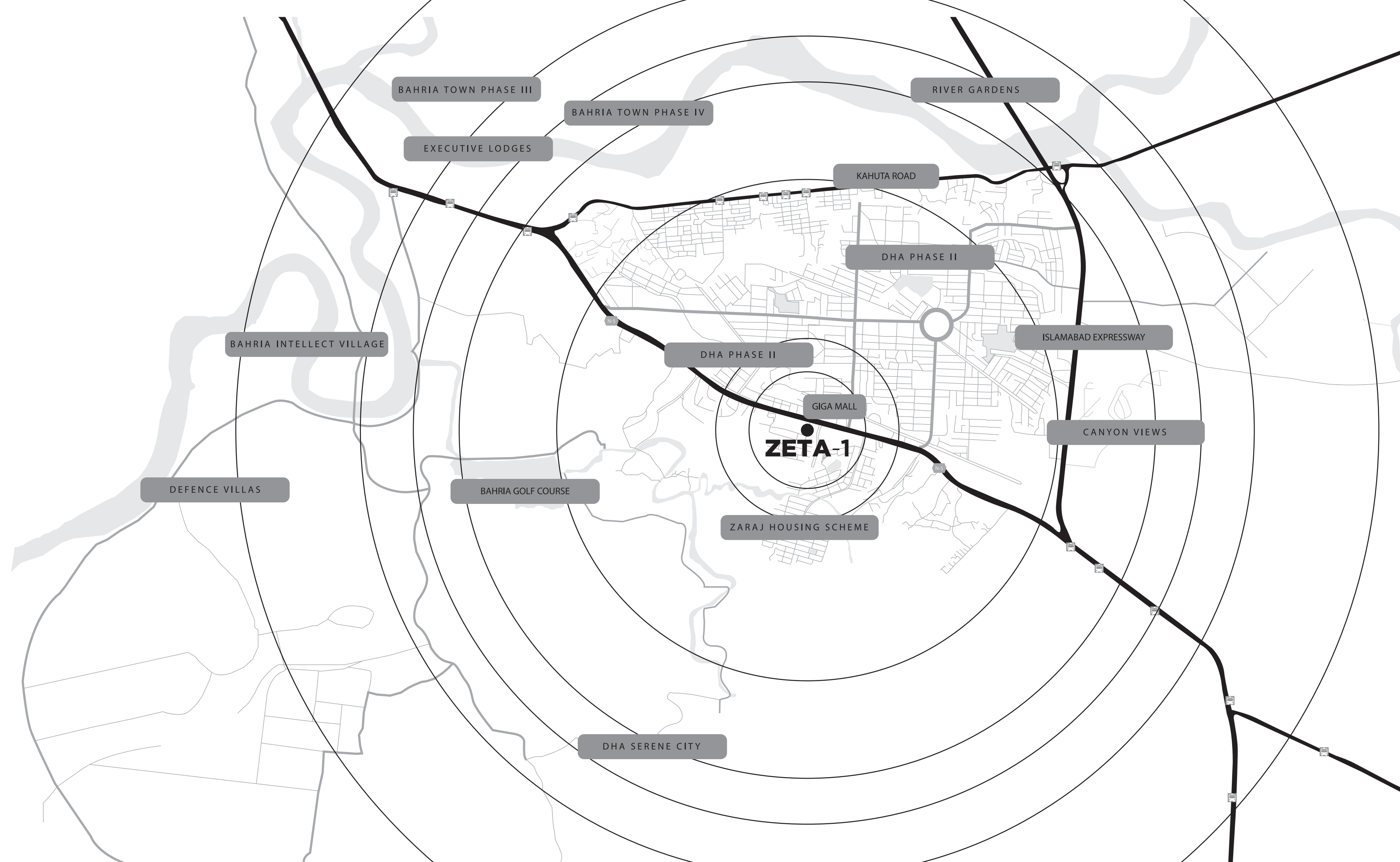


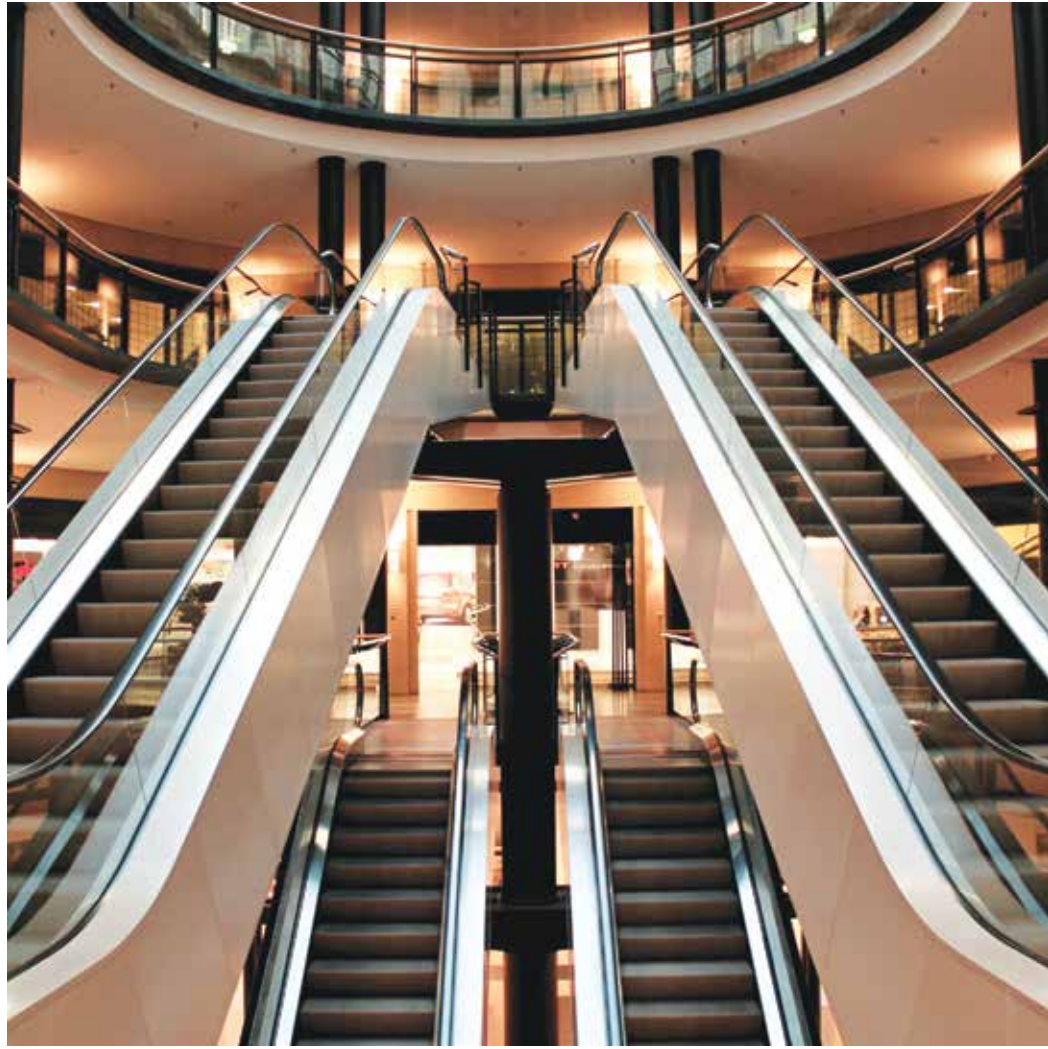
TWENTY FOUR HOUR CITY

A PROJECT BY ZARAJ GROUP BUILDERS

The building is not just a beauty itself but is also neighbored and basically in front of the most famous mall of Islamabad that is **GIGA Mall**. There are also many famous places near the **Z1** project, such as Gloria jeans, KFC, Askari Islamic Bank, MCB Bank, DHA, GT Road and all such places that a person visits usually. Basically everything will be within your range in **Z1** and It's surrounding . if you choose **Z1** luxurious apartments to live. The perk of living at **Z1** is certainly its locality as well as other prominent factors, as it is located at the heart of twin cities and can be reached from one of the twin city to another within minutes, such as the distance from Faizabad Rawalpindi to **Z1** is about 40 minutes or less.

RIGHT INFRONT OF GIGA MALL





A PROJECT BY ZARAJ GROUP BUILDERS

ZETA-1

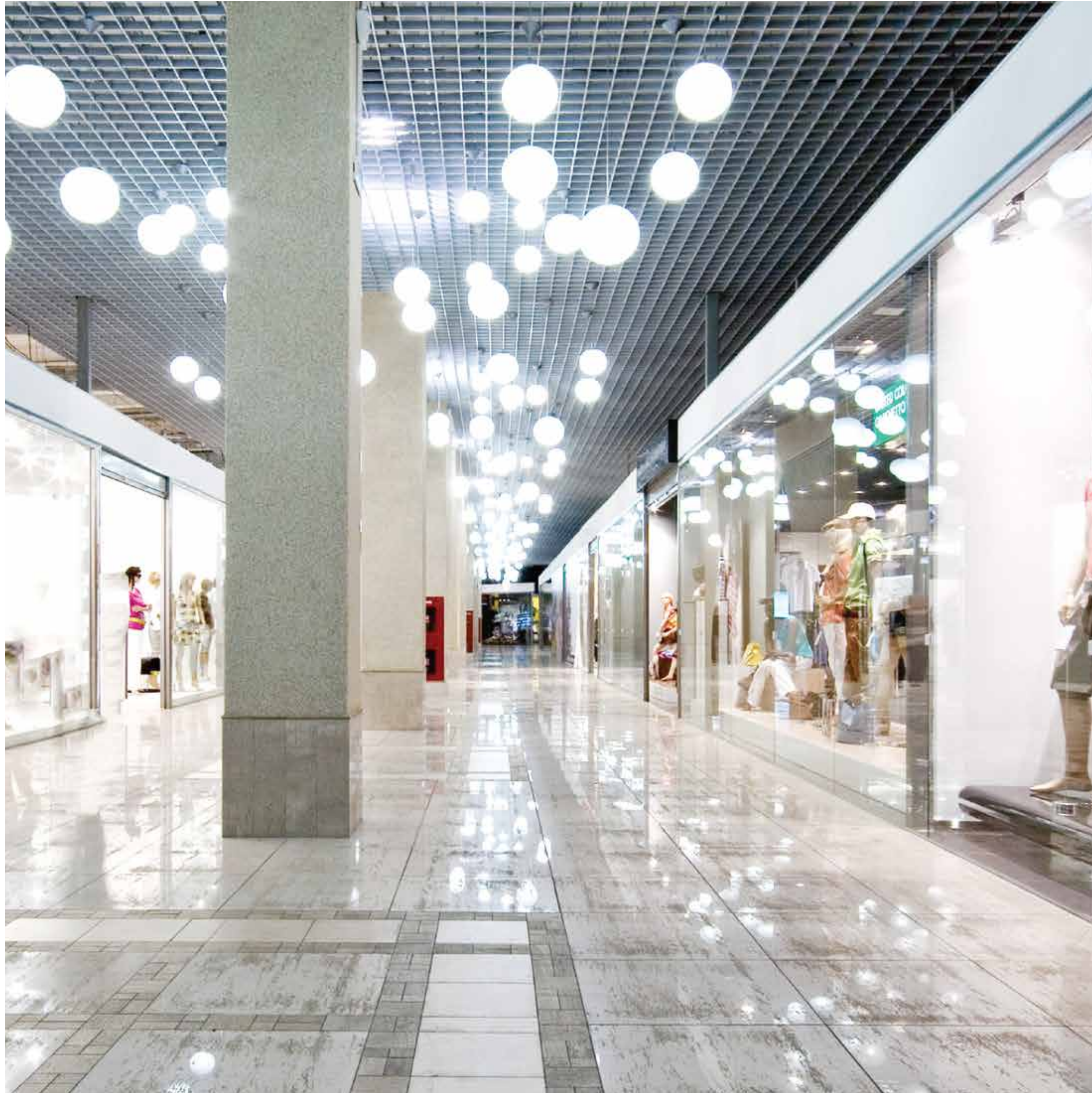
FEATURES AND AMENITIES

Z1 project comprises all world-class features and amenities imaginable such as retail outlets, general store, separate gyms for men and women, salons, banks, restaurants, food court etc. The most imperative and highly essential feature of the building is that it is developed with an earthquake resistant structure which is the need of the time considering the ratio of earthquake increasing in Pakistan.

The, beautifully designed and exquisitely carved out masterplan of **Z1's** apartments with essentially all living facilities and amenities that too at an affordable price attains attention of home seekers as well as investors. **Z1** being located at a prime location especially in front of GIGA Mall, provides an easy access to all major landmarks of Islamabad and Rawalpindi. Project **Z1** has everything one would wish for their future residence including luxury, comfort, security, easy access and serene environment. Some of the highlighted features and amenities of this project are as follows:

- 350 Shops
- 120 Apartments
- 7 Floors
- Picturesque view
- Restaurants and Cafés
- Safe and sound environment
- State-of-the-Art interior design
- Retail Outlets
- Grocery Store
- Centrally Air-Conditioned
- Security system
- Car Parking





ZETA-1

COMMERCIAL FLOORS

LOWER GROUND | UPPER GROUND | FIRST FLOOR | SECOND & THIRD FLOOR



ZETA-1

LOWER GROUND FLOOR PARKING & SHOPS

NUMBER OF SHOPS 38 | NUMBER OF CARS 86

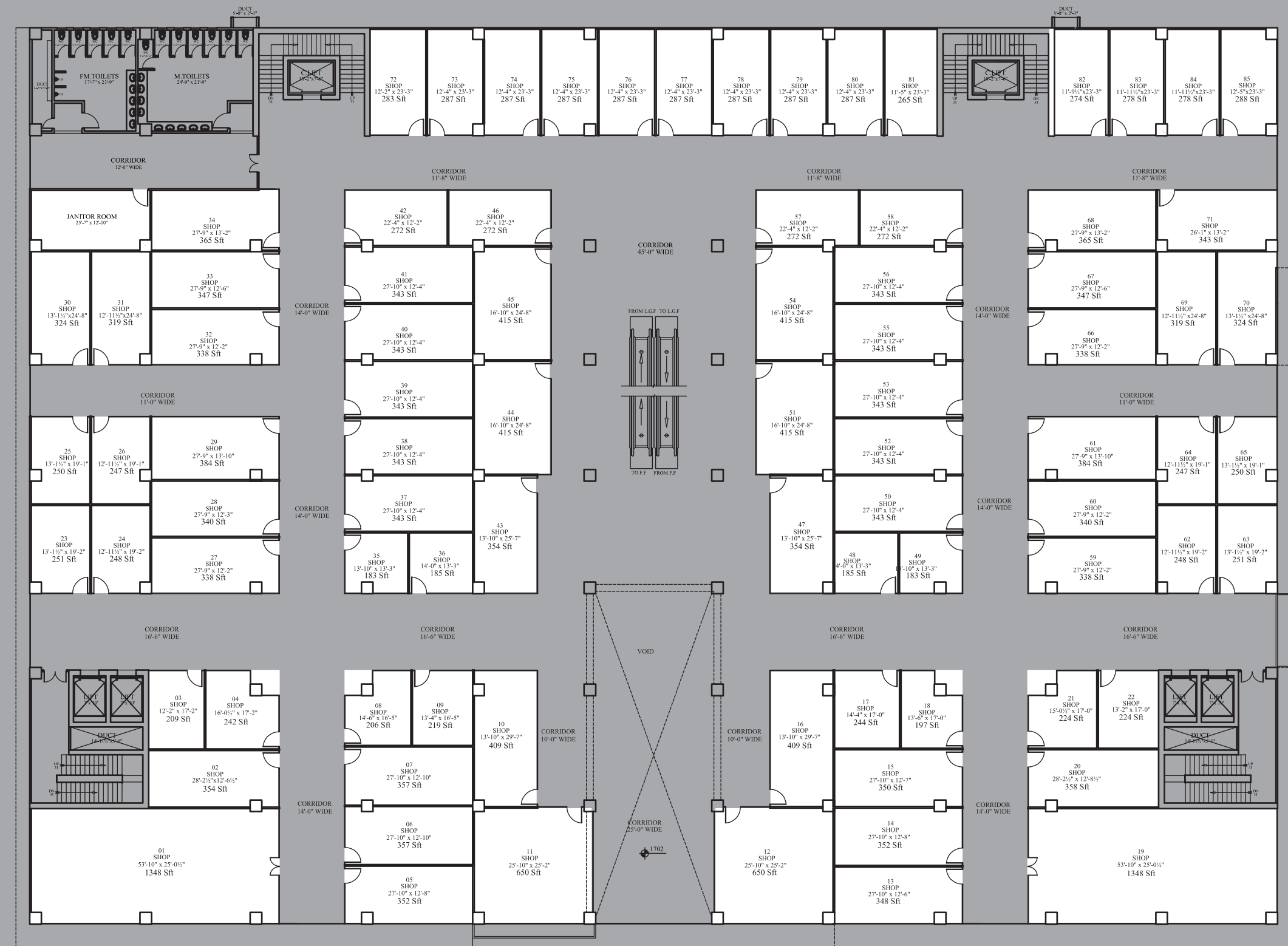


ZETA-1

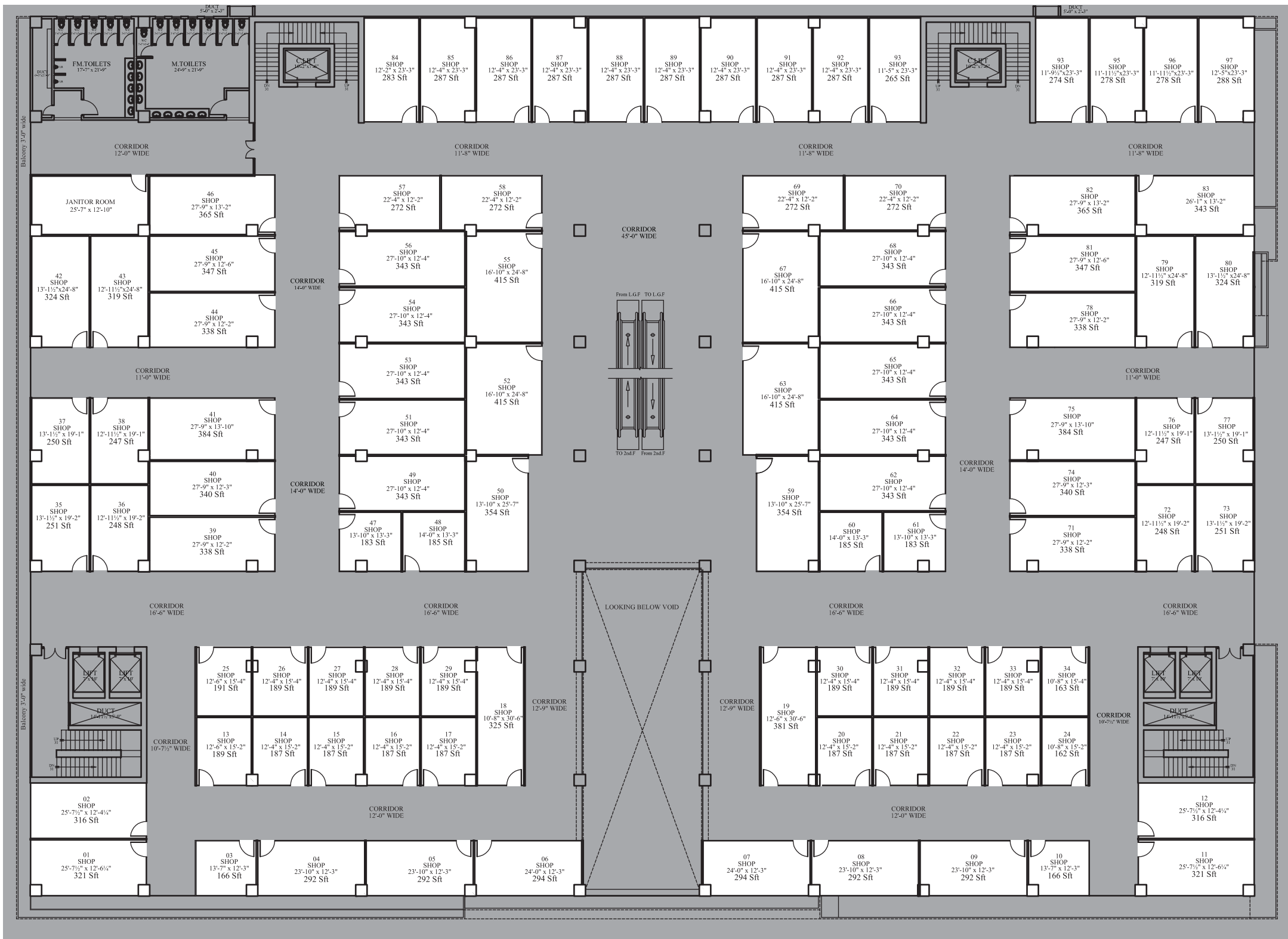
UPPER GROUND FLOOR SHOPS

A PROJECT BY ZARAJ GROUP BUILDERS

A PROJECT BY ZARAJ GROUP BUILDERS

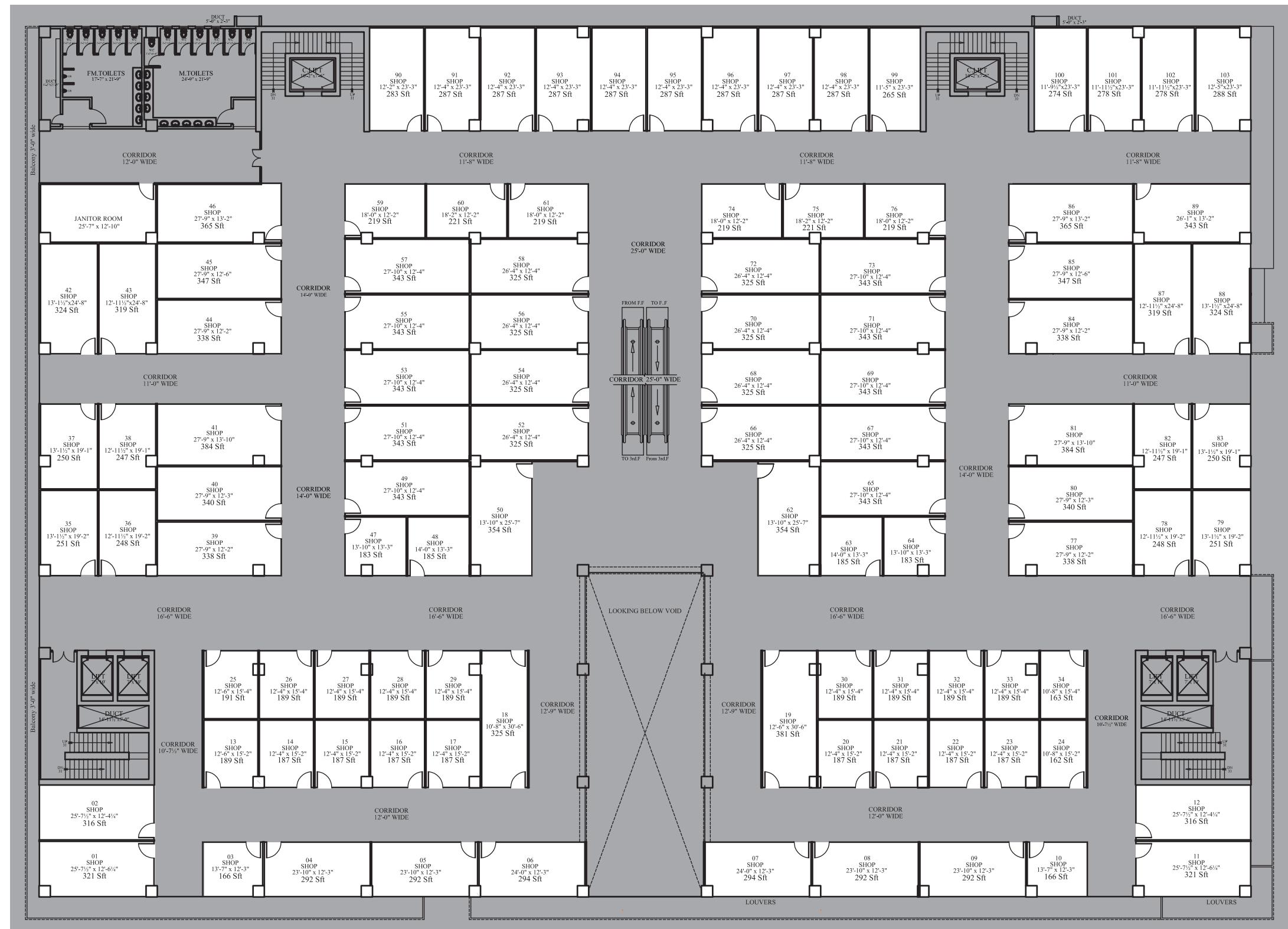


NUMBER OF SHOPS 85



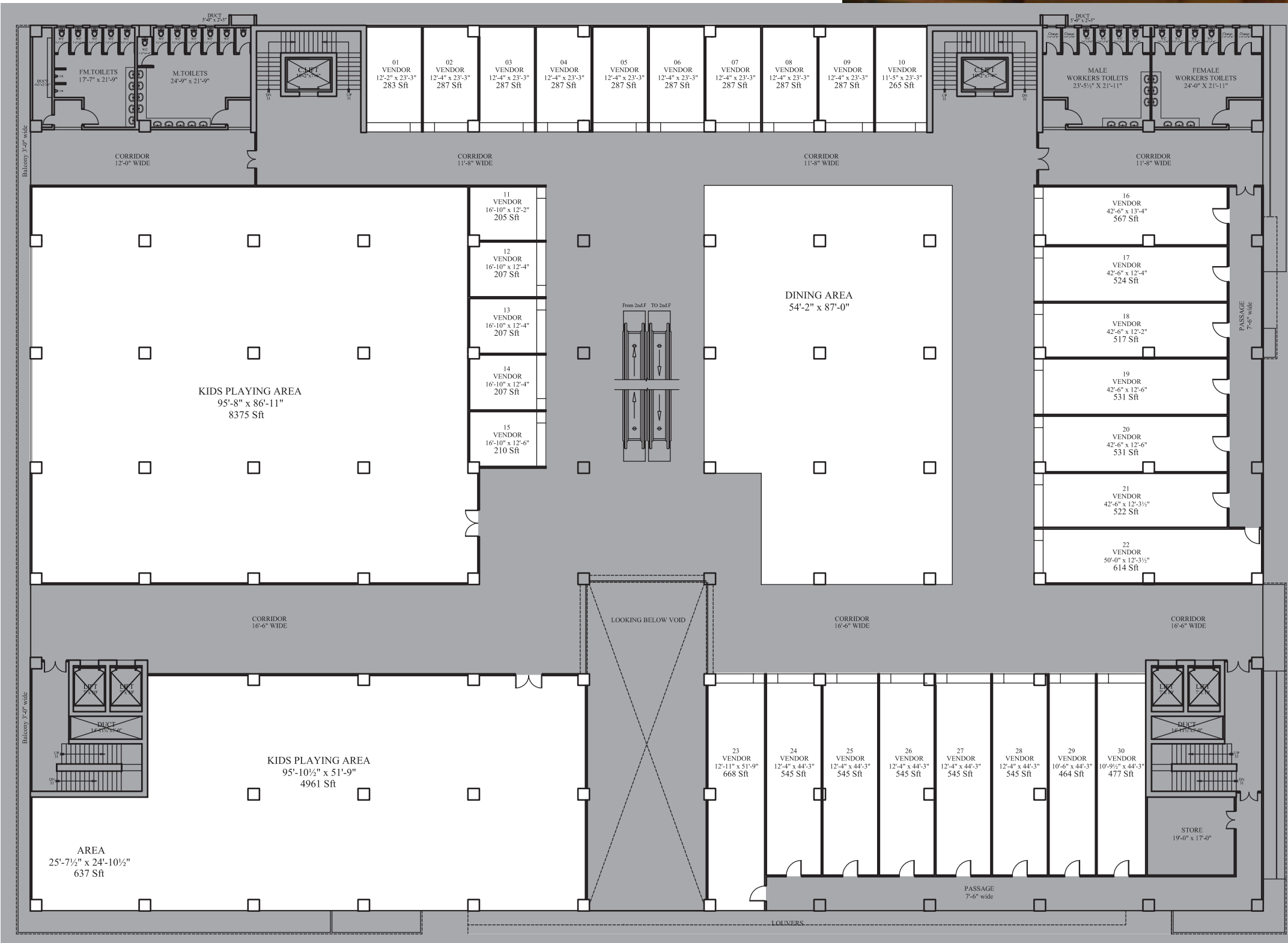
FIRST FLOOR SHOPS

NUMBER OF SHOPS 97



SECOND FLOOR SHOPS

NUMBER OF SHOPS 103



**THIRD
FLOOR
GAMMING
& FOOD COURT**

REDEFINING LIVING SPACE

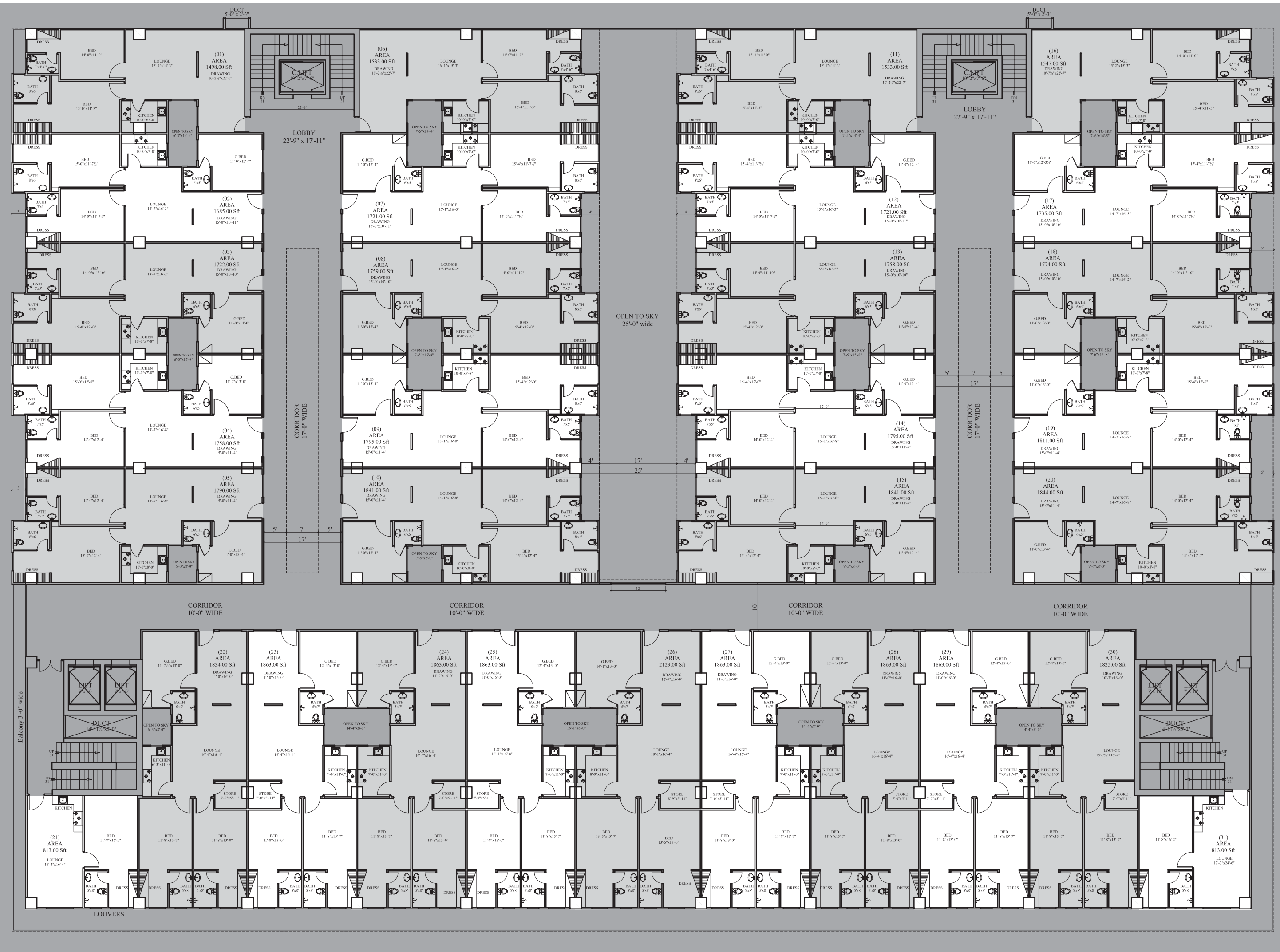


ZETA-1

APARTMENTS FLOORS

4TH, 5TH, 6TH, 7TH FLOOR

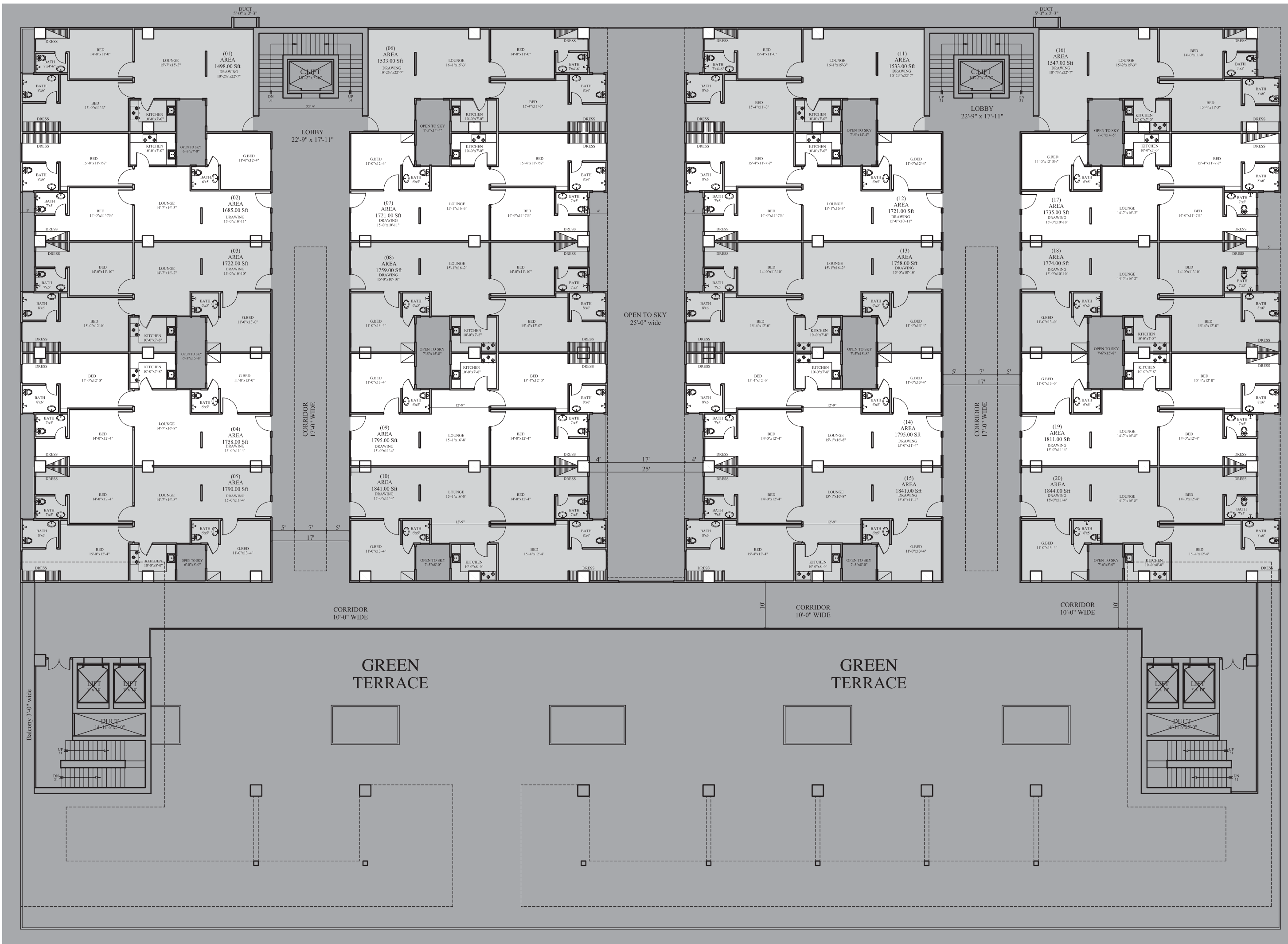
Z1 promises to bring an exquisitely luxurious and comfortable lifestyle to its residents, its alluring look and eloquent interior designs are extremely fanciable. **3-Bed** luxury apartments to choose from as per you liking. With this project Zaraj Group Builders emphasized on bringing a world class lifestyle with an emphases on design brilliance, practicality and comfort. **Z1**, while staying true to the elegance of nature, is an enduring commitment to a new urban lifestyle, whereas, the unsurpassed features, amenities, and superlative facilities will take your shopping expectations beyond perfect and will bring your lifestyle to new heights.



ZETA-1

TYPICAL FLOORS APARTMENTS





ZETA-1

SEVENTH FLOOR APARTMENTS

APARTMENT 3D VIEW TYPE-A

1864.00 Sft



DRAWING | 11'-0" X 16'-0" LOUNGE | 16'-4" X 16'-4" G.BED | 12'-4" X 13'-0" BED | 11'-8" X 13'-0" BED | 11'-8" X 15'-7"
 KITCHEN | 7'-0" X 11'-0" STORE | 7'-0" X 5'-11" BATH | 5'-0" X 7'-0" BATH | 5'-0" X 8'-0" BATH | 5'-0" X 8'-0"

APARTMENT 3D VIEW TYPE-B

1735.00 Sft



DRAWING | 15'-0" X 11'-4" LOUNGE | 15'-1" X 16'-8" G.BED | 11'-0" X 13'-4" BED | 15'-4" X 12'-0"
 BED | 14'-0" X 12'-4" KITCHEN | 10'-0" X 7'-8" BATH | 8'-0" X 6'-0" BATH | 7'-0" X 5'-0"
 BATH | 6'-0" X 5'-0"



ZETA-1

A HEADWAY TO LUXURY
LIFESTYLE
